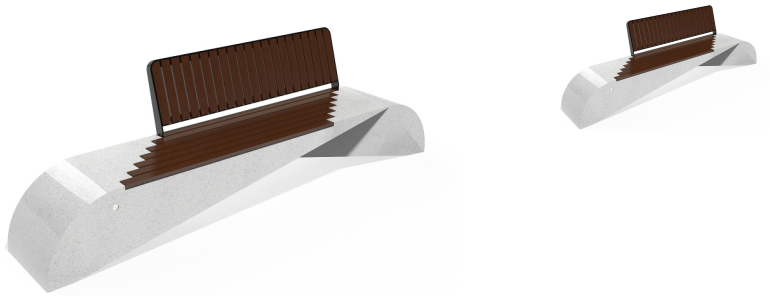


Creating Brands of the Future



CONCRETE BENCH 248 PR Resysta polished aggregate

Bench with backrest from the product range of concrete benches by Encho Enchev - ETE with a characteristic design, giving it individuality and style. The bench is made out of high-performance reinforced fiber concrete and polished aggregate. The marble and granite stones that form the aggregate structure are natural and have the opportunity for different color variations. The metal components making up the seat and back of the bench are made of stainless steel. The concrete bench is combined with certified, hard bamboo wood. The additional treatment of the polishes ...

2,834.00 €

Diameter: 295.0 cm

Length: 61.0 cm

Height: 84.0 cm

BRACKET Steel



RAL 7024

CIRCLE Stainless Steel



81 AISI 3

BOLT Stainless Steel



81 AISI 3

BASE Natural Marble aggregates



22 Brown



31 White



34 Scatte



35 Grey



AR / VR



WEBSITE