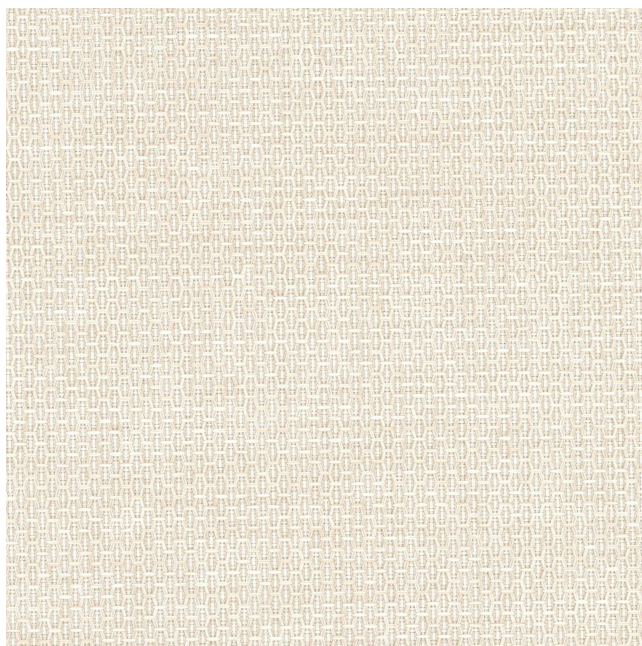


# Creating Brands of the Future



## Luis Collection

3.50 €

Grammage m2 350g/m<sup>2</sup> +/-5%

Composition 100% Polyester

Usable width min. 140cm

Martindale Test 20000-30000

Thread displacement 1,3-1,5 mm WARP / 1,2-1,4 mm WEFT

Pilling resistance 4

Fastness to rubbing drylight 4-5 / medium 4-5 / dark 4-5

Fastness to rubbing wetlight 5 / medium 4-5 / dark 4-5

**Diameter:** 142.0 cm

**Length:** 100.0 cm

**Height:** 0.0 cm

## Fabrics/Leather

- |         |         |         |         |         |         |         |         |
|---------|---------|---------|---------|---------|---------|---------|---------|
| Luis 02 | Luis 03 | Luis 04 | Luis 13 | Luis 16 | Luis 17 | Luis 34 | Luis 39 |
| Luis 48 | Luis 52 | Luis 59 | Luis 63 | Luis 68 | Luis 70 | Luis 74 | Luis 75 |
| Luis 77 | Luis 80 | Luis 83 | Luis 85 | Luis 90 | Luis 97 |         |         |



AR / VR



WEBSITE