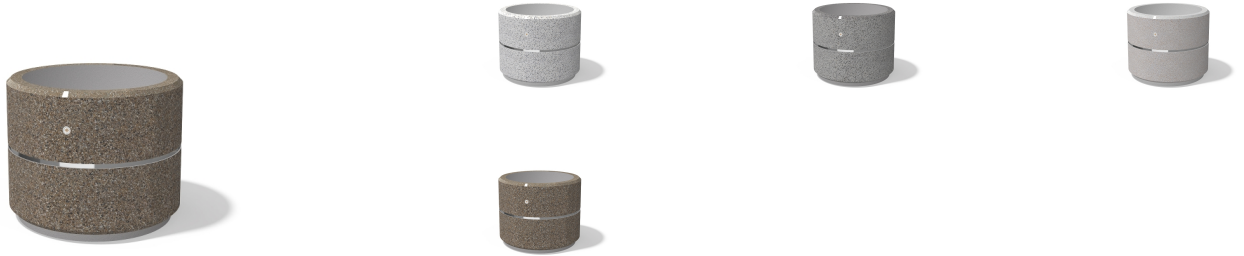


# Creating Brands of the Future



## ROUND CONCRETE PLANTER 22 exposed aggregate

Model from the series of round concrete planters by Encho Enchev-ETE, in which the designers have offered a great ratio between height and diameter, turning every park, square or alley into a masterpiece of art. The flowerpot is made out of high-performance concrete and natural embossed aggregate. The aggregate structure is composed of natural marble or granite stones with specific dimensions. The surface is treated with special protective coating. It reduces the deposition of contaminants and further increases the resistance of the product to aggressive weather c ...

487.00 €

Diameter: 80.0 cm

Length: 80.0 cm

Height: 65.0 cm

Ring Stainless Steel



81 AISI 3

Logo Stainless Steel



81 AISI 3

Base Natural Marble aggregates



42 Brown



51 White



52 Scatte



53 Grey



AR / VR



WEBSITE