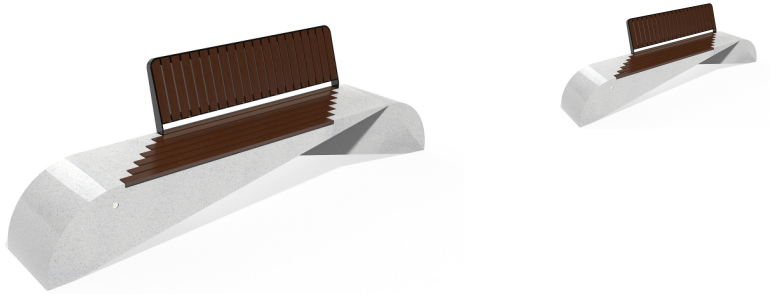


# Creating Brands of the Future



## CONCRETE BENCH 248 PS polished aggregate

Bench with backrest from the product range of concrete benches by Encho Enchev - ETE with a characteristic design, giving it individuality and style. The bench is made out of high-performance reinforced fiber concrete and polished aggregate. The marble and granite stones that form the aggregate structure are natural and have the opportunity for different color variations. The metal components making up the seat and back of the bench are made of stainless steel. The concrete bench is combined with certified, hard bamboo wood. The additional treatment of the polishes ...

**2,483.00 €**

**Diameter:** 295.0 cm

**Length:** 61.0 cm

**Height:** 84.0 cm

**BRACKET** Steel



RAL 7024

**CIRCLE** Stainless Steel



81 AISI 3

**BOLT** Stainless Steel



81 AISI 3

**BASE** Natural Marble aggregates



22 Brown



31 White



34 Scatte



35 Grey



AR / VR



WEBSITE