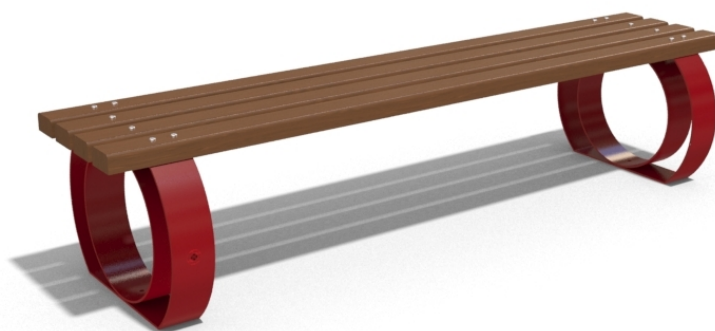
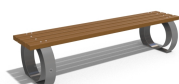
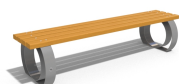
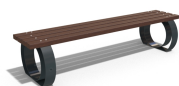




METAL BENCH 50 MR



LEGS Steel:



RAL 702...



RAL 900...



RAL 900...



RAL 900...

BOLT Stainless Steel:



81 AISI...

CIRCLE Stainless Steel:



81 AISI...

Classic metal bench without backrest – version of model 52. Made out of certified wood and metal. Electro-galvanizing and powder coating protects the metal from corrosion and increases its performance. A special coating is applied to the planks, which protects them from aggressive weather conditions and prolongs their life. The elements connecting ...

Diameter: 190,0 cm

Length: 54,0 cm

Height: 42,0 cm



AR / VR



WEBSITE



371,00 €



AR / VR



WEBSITE